

Aerial Map

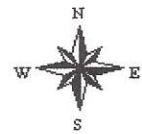


map center: 44° 55' 35.3, -97° 3' 20.53

0ft 827ft 1654ft

Maps Provided By:
surety
CUSTOMIZED ONLINE MAPPING
© AgriData, Inc. 2017 www.AgriDataInc.com

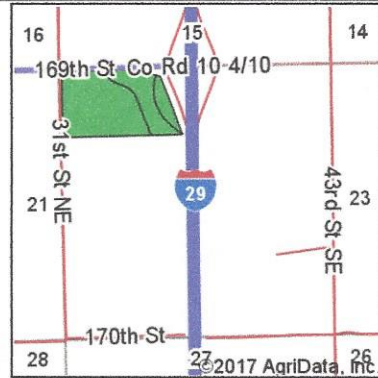
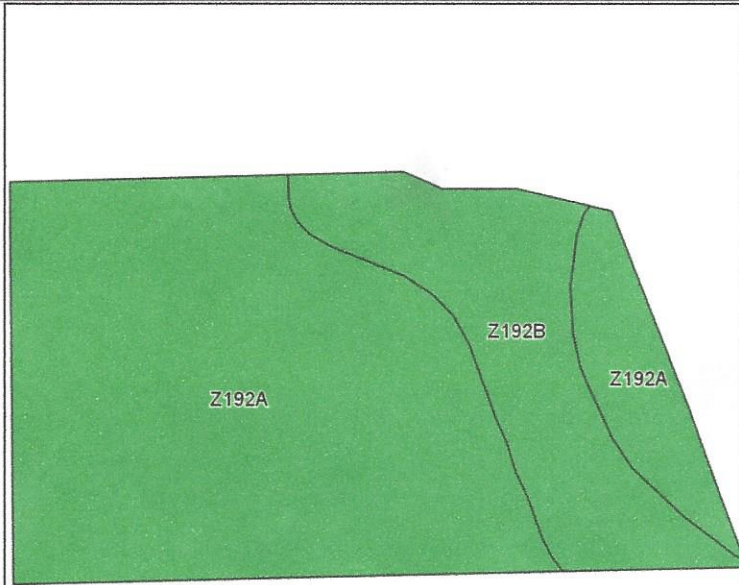
22-117N-52W
Codington County
South Dakota



8/1/2017

Field borders provided by Farm Service Agency as of 5/21/2008.

Soils Map





State: **South Dakota**
 County: **Codington**
 Location: **22-117N-52W**
 Township: **Elmira**
 Acres: **61.64**
 Date: **8/1/2017**

©2017 AgriData, Inc.

Soils data provided by USDA and NRCS.

Maps Provided By:  
 CUSTOMIZED ONLINE MAPPING
 © AgriData, Inc. 2017 www.AgrDataInc.com

Area Symbol: SD029, Soil Area Version: 20

Code	Soil Description	Acres	Percent of field	PI Legend	Non-Irr Class *c	Productivity Index	State Productivity Index
Z192A	Vienna-Brookings complex, coteau, 0 to 2 percent slopes	47.19	76.6%		Is	89	75
Z192B	Vienna-Brookings complex, coteau, 1 to 6 percent slopes	14.45	23.4%		Ile	85	71
Weighted Average						88.1	74.1

*c: Using Capabilities Class Dominant Condition Aggregation Method

Soils data provided by USDA and NRCS.