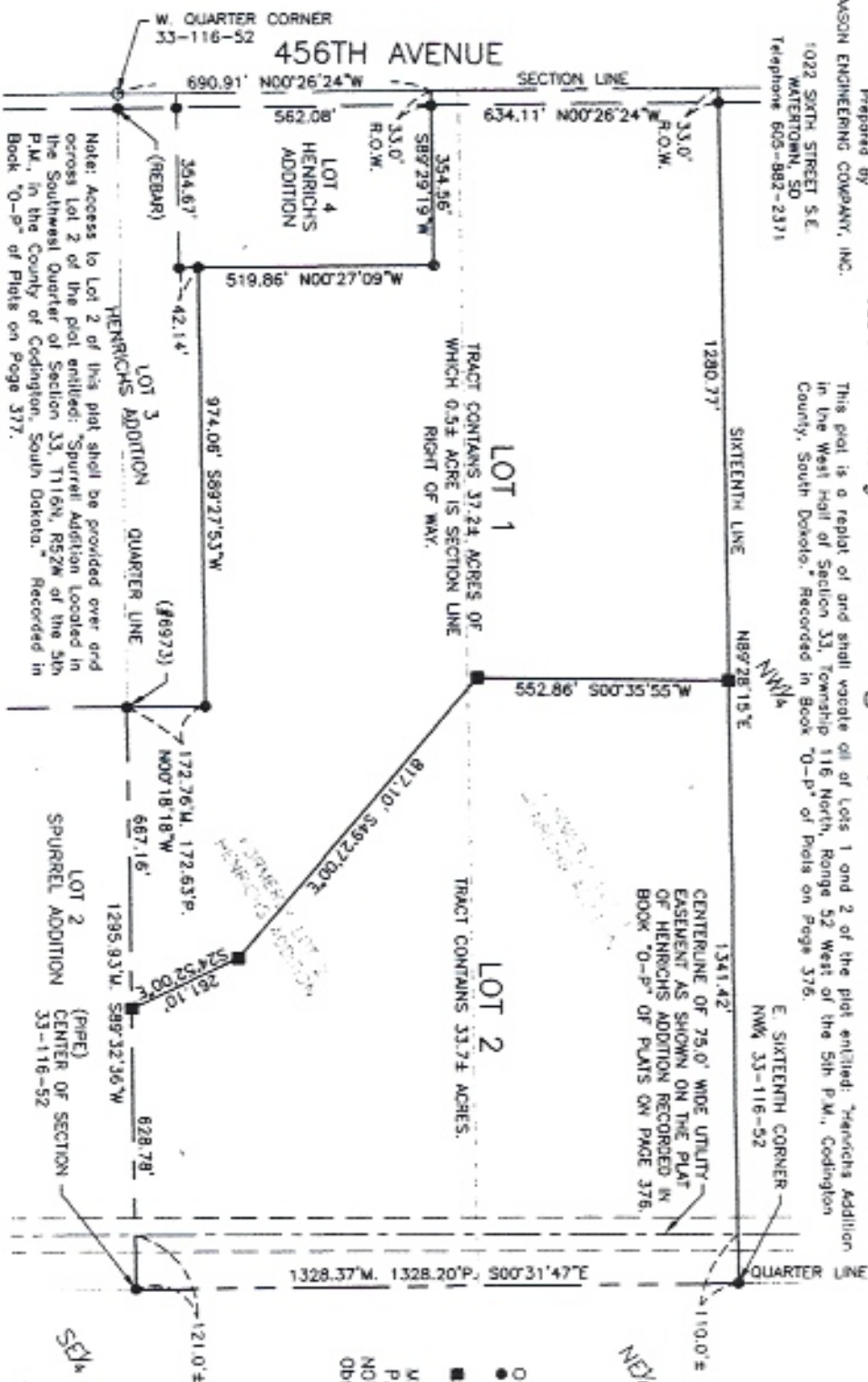




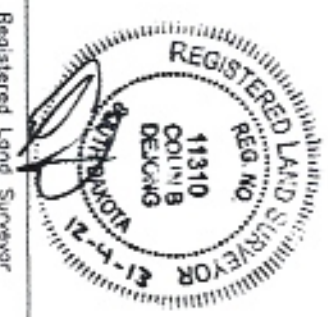
Prepared By
MASON ENGINEERING COMPANY, INC.
 1022 SIXTH STREET S.E.
 WATERLOO, SD
 Telephone 605-882-2371

Replat of Lots 1 and 2 of Henrichs Addition in the West Half of Section 33, Township 116 North, Range 52 West of the 5th P.M., in the County of Codington, South Dakota.

This plat is a replat of and shall vacate all of lots 1 and 2 of the plat entitled: "Henrichs Addition in the West Half of Section 33, Township 116 North, Range 52 West of the 5th P.M., Codington County, South Dakota." Recorded in Book "0-P" of Plats on Page 376.



- December 4, 2013
 Scale: 1"=300'
- Calculated Corner
 - #2092 Recovered Unless Noted Otherwise
 - ½"x18" Rebar w/ Plastic Cap Stamped #11310 Set
 - M. Measured Distance
 - P. Previously Platted Distance
- NOTE: Bearings are based on GPS Observation.

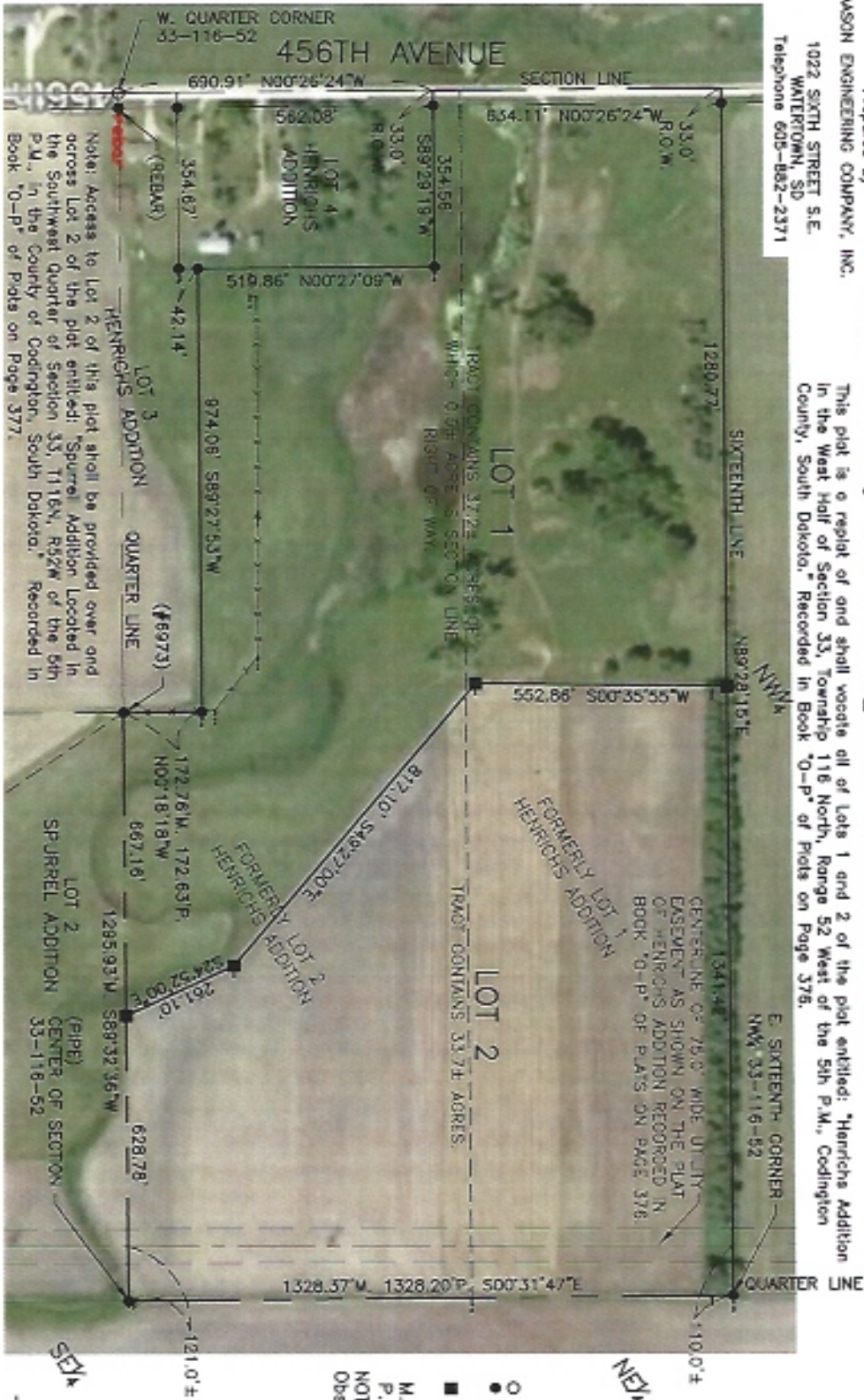




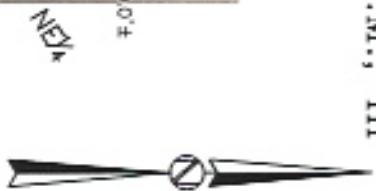
Prepared By
MASON ENGINEERING COMPANY, INC.
 1022 SIXTH STREET S.E.
 WATERLOO, SD
 Telephone 605-882-2371

Replat of Lots 1 and 2 of Henrichs Addition in the West Half of Section 33, Township 116 North, Range 52 West of the 5th P.M., in the County of Codington, South Dakota.

This plat is a replat of and shall vacate all of Lots 1 and 2 of the plat entitled: "Henrichs Addition in the West Half of Section 33, Township 116 North, Range 52 West of the 5th P.M., Codington County, South Dakota." Recorded in Book "O-P" of Plats on Page 376.



Note: Access to Lot 2 of this plat shall be provided over and across Lot 2 of the plat entitled: "Spurrel Addition Located in the Southwest Quarter of Section 33, T116N, R52W of the 5th P.M., in the County of Codington, South Dakota." Recorded in Book "O-P" of Plats on Page 377.



- December 4, 2013
 Scale: 1"=300'
- Calculated Corner
 - #2092 Recovered Unless Noted Otherwise
 - ½"x18" Rebar w/ Plastic Cap Stamped #11310 Set
 - M. Measured Distance
 - P. Previously Platted Distance
- NOTE: Bearings are based on GPS Observation.

Registered Land Surveyor