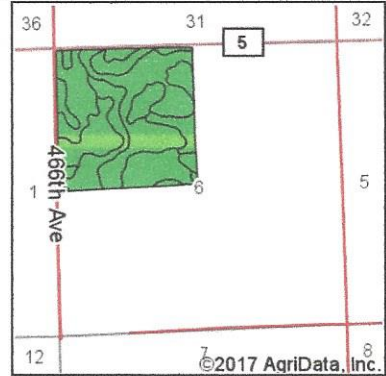
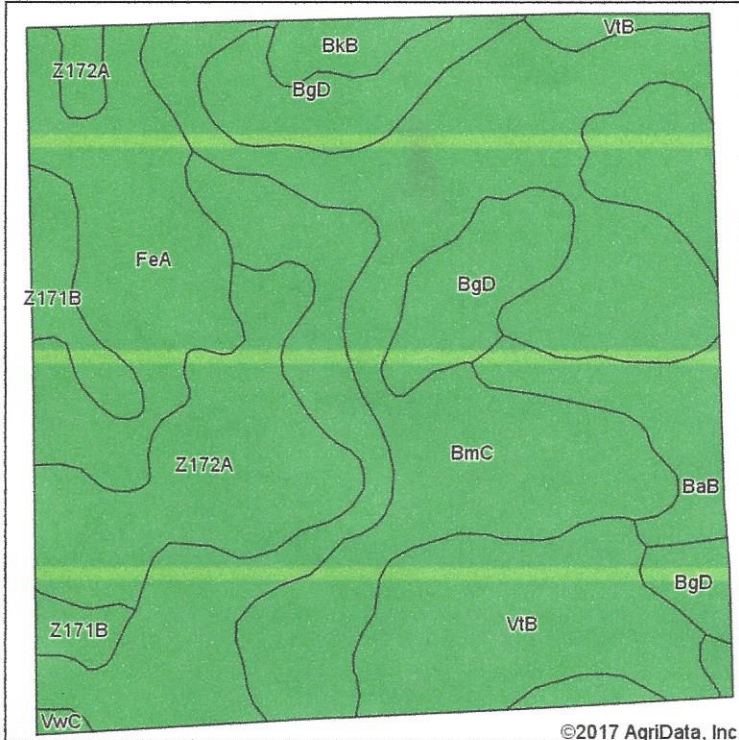


Soils Map



State: **South Dakota**
 County: **Deuel**
 Location: **6-113N-50W**
 Township: **Grange**
 Acres: **148.19**
 Date: **8/25/2017**



Soils data provided by USDA and NRCS.

©2017 AgriData, Inc.

Area Symbol: SD039, Soil Area Version: 19

Code	Soil Description	Acres	Percent of field	PI Legend	Non-Irr Class *c	Productivity Index	State Productivity Index	Alfalfa hay	Corn	Soybeans	Spring wheat	Winter wheat
BmC	Barnes-Svea-Buse loams, 2 to 9 percent slopes	44.45	30.0%		IIle	64	55	2.9	69	25	31	34
BaB	Barnes clay loam, 2 to 6 percent slopes	30.01	20.3%		Ile	83	71	3.1	79	29	35	38
FeA	Fordville loam, coteau, 0 to 2 percent slopes	17.27	11.7%		IIs	59	51					
Z172A	Renshaw loam, coteau, 0 to 2 percent slopes	17.12	11.6%		IIIs	41	35					
VtB	Vienna-Brookings complex, 1 to 6 percent slopes	16.74	11.3%		Ile	86	74	3.5	87	32	38	41
BgD	Barnes-Buse-Svea loams, 2 to 15 percent slopes	14.69	9.9%		IVe	53	46	2.6	56	20	26	28
Z171B	Renshaw-Fordville loams, coteau, 2 to 6 percent slopes	5.11	3.4%		IVs	43	37					
BkB	Barnes-Svea loams, 1 to 6 percent slopes	2.45	1.7%		Ile	83	71	3.3	84	31	36	40
VwC	Vienna-Buse complex, 6 to 9 percent slopes	0.35	0.2%		IIle	64	55	2.7	63	23	29	32
Weighted Average						65.6	56.4	2.2	53.6	19.5	23.9	26

*c: Using Capabilities Class Dominant Condition Aggregation Method

Soils data provided by USDA and NRCS.