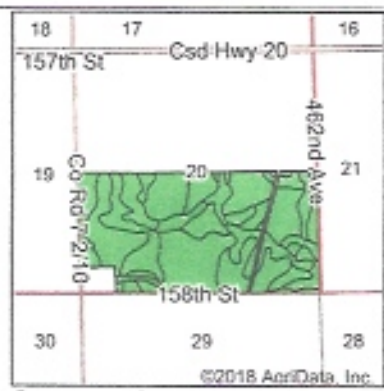
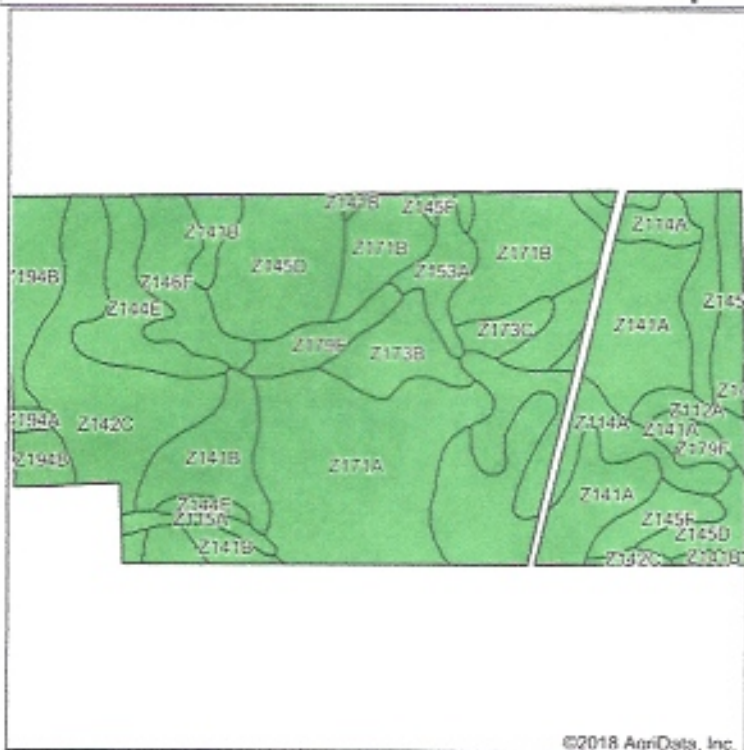




# Soils Map



State: **South Dakota**  
 County: **Codington**  
 Location: **20-119N-51W**  
 Township: **Leola**  
 Acres: **303.74**  
 Date: **9/11/2018**



Soils data provided by USDA and NRCS.

©2018 AgriData, Inc.

Area Symbol: SD029, Soil Area Version: Z1								
Code	Soil Description	Acres	Percent of field	PI Legend	Non-Irr Class %c	Productivity Index	State Productivity Index	NCCPI Soybeans
Z171A	Renshaw-Fordville loams, coteau, 0 to 2 percent slopes	44.56	14.7%		IIIs	47	39	35
Z141A	Barnes-Svea loams, coteau, 0 to 2 percent slopes	42.06	13.8%		Ie	87	73	61
Z142C	Barnes-Buse-Svea loams, coteau, 2 to 9 percent slopes	31.03	10.2%		IIIe	63	53	56
Z141B	Barnes-Svea loams, coteau, 1 to 5 percent slopes	27.41	9.0%		Ile	83	70	59
Z171B	Renshaw-Fordville loams, coteau, 2 to 6 percent slopes	25.53	8.4%		IVs	43	36	34
Z145D	Buse-Barnes loams, coteau, 2 to 15 percent slopes, very stony	24.30	8.0%		VIIIs	9	8	27
Z114A	Hamerly-Tonka complex, coteau, 0 to 2 percent slopes	21.48	7.1%		IIIs	66	55	51
Z194B	Barnes clay loam, coteau, 2 to 6 percent slopes	14.20	4.7%		Ile	80	67	54
Z144E	Buse-Barnes loams, coteau, 9 to 20 percent slopes	13.29	4.4%		VIe	41	34	48
Z145F	Buse-Barnes loams, coteau, 9 to 40 percent slopes, very stony	12.61	4.2%		VIIIs	6	5	13
Z146F	Buse-Lamoure, channeled, frequently flooded, complex, 0 to 40 percent slopes	11.29	3.7%		VIIe	10	8	12
Z173B	Renshaw-Sioux complex, coteau, 2 to 6 percent slopes	9.27	3.1%		IVs	34	29	25
Z179F	Sioux-Renshaw complex, 15 to 40 percent slopes, very stony	8.25	2.7%		VIIIs	5	4	5
Z153A	Lamoure-Rauville silty clay loams, channeled, 0 to 2 percent slopes, frequently flooded	6.34	2.1%		VIw	13	11	16
Z112A	Vallers-Hamerly loams, coteau, 0 to 2 percent slopes	4.09	1.3%		IVw	51	43	47
Z173C	Renshaw-Sioux complex, 6 to 9 percent slopes	3.61	1.2%		IVe	27	23	24
Z115A	Hamerly-Badger complex, coteau, 0 to 2 percent slopes	2.75	0.9%		IIIs	72	60	56
Z194A	Barnes clay loam, coteau, 0 to 2 percent slopes	1.01	0.3%		Iw	85	71	55
J119E	Buse-Sioux complex, 9 to 40 percent slopes	0.98	0.2%		VIIe	10	8	5
Weighted Average						51.4	43.1	41.7

\*Using Capabilities Class Dominant Condition Aggregation Method



## Soils Map



Soils data provided by USDA and NRCS.



State: **South Dakota**  
 County: **Codington**  
 Location: **20-119N-51W**  
 Township: **Leola**  
 Acres: **49.91**  
 Date: **9/11/2018**

Maps Provided By



Area Symbol: SD029, Soil Area Version: 21

Code	Soil Description	Acres	Percent of field	PI Legend	Non-ir Class *c	Productivity Index	State Productivity Index	NCCPI Soybeans
Z142C	Barnes-Buse-Svea loams, coteau, 2 to 9 percent slopes	26.45	53.0%		IIIe	63	53	56
Z194B	Barnes clay loam, coteau, 2 to 6 percent slopes	13.29	26.6%		IIe	80	67	54
Z141B	Barnes-Svea loams, coteau, 1 to 6 percent slopes	6.64	13.3%		IIe	83	70	59
Z144E	Buse-Barnes loams, coteau, 9 to 20 percent slopes	2.53	5.1%		VIe	41	34	48
Z194A	Barnes clay loam, coteau, 0 to 2 percent slopes	1.00	2.0%		Iw	85	71	55
<b>Weighted Average</b>						<b>69.5</b>	<b>58.4</b>	<b>55.4</b>

\*c: Using Capabilities Class Dominant Condition Aggregation Method

Soils data provided by USDA and NRCS.