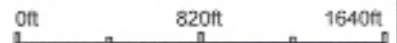


# Aerial Map



map center: 45° 8' 45.89, -96° 52' 25.95



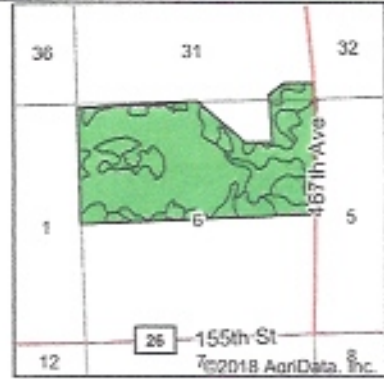
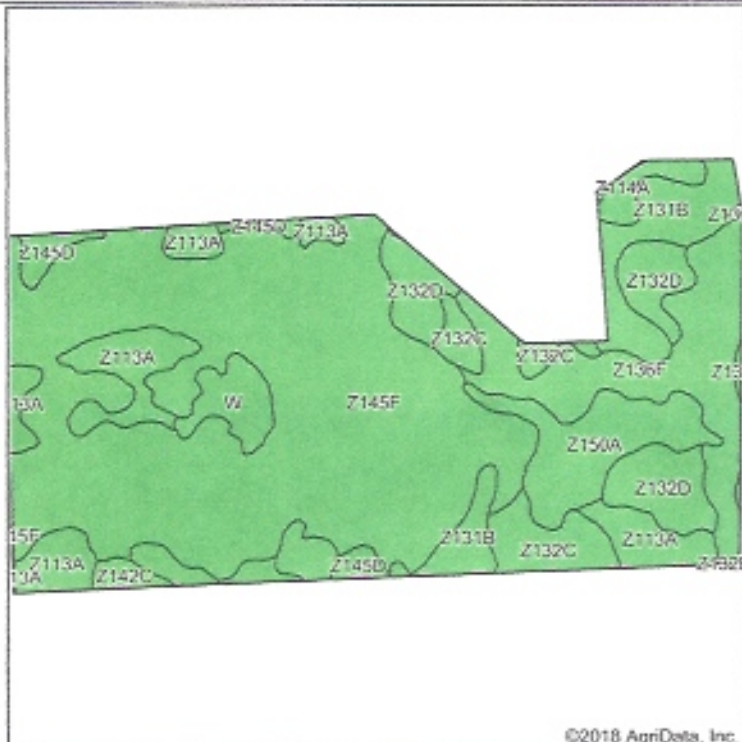
**6-119N-50W**  
**Grant County**  
**South Dakota**



9/11/2018

Field borders provided by Farm Service Agency as of 5/21/2008.

## Soils Map



State: **South Dakota**  
 County: **Grant**  
 Location: **6-119N-50W**  
 Township: **Stockholm**  
 Acres: **291.45**  
 Date: **9/11/2018**

Maps Provided By:



Soils data provided by USDA and NRCS.

©2018 AgriData, Inc.

Area Symbol: SD029, Soil Area Version: 21  
 Area Symbol: SD051, Soil Area Version: 19

| Code                    | Soil Description   | Acres  | Percent of field | PI Legend | Non-Irr Class *c | Productivity Index | State Productivity Index | NCCPI Soybeans |
|-------------------------|--|--------|------------------|-----------|------------------|--------------------|--------------------------|----------------|
| Z145F                   | Buse-Barnes loams, coteau, 9 to 40 percent slopes, very stony                            | 145.27 | 49.8%            |           | Vlls             | 6                  | 5                        | 13             |
| Z113A                   | Vallers-Parnell complex, coteau, 0 to 2 percent slopes                                   | 30.32  | 10.4%            |           | IVw              | 43                 | 36                       | 23             |
| Z136F                   | Buse-Langhei complex, 9 to 40 percent slopes, very stony                                 | 30.28  | 10.4%            |           | Vlls             | 7                  | 6                        | 3              |
| Z132D                   | Forman-Buse-Aastad loams, coteau, 2 to 15 percent slopes                                 | 19.88  | 6.8%             |           | IVe              | 52                 | 44                       | 52             |
| Z131B                   | Forman-Aastad loams, coteau, 1 to 6 percent slopes                                       | 17.39  | 6.0%             |           | Ile              | 83                 | 70                       | 57             |
| Z150A                   | Rauville silty clay loam, coteau, 0 to 1 percent slopes, frequently flooded              | 16.77  | 5.8%             |           | Vw               | 23                 | 19                       | 1              |
| Z132C                   | Forman-Buse-Aastad loams, coteau, 2 to 9 percent slopes                                  | 12.70  | 4.4%             |           | IIle             | 64                 | 54                       | 54             |
| Z145D                   | Buse-Barnes loams, coteau, 2 to 15 percent slopes, very stony                            | 6.42   | 2.2%             |           | Vlls             | 9                  | 8                        | 27             |
| W                       | Water  | 6.24   | 2.1%             |           |                  | 0                  | 0                        | 0              |
| Z114A                   | Hamerly-Tonka complex, coteau, 0 to 2 percent slopes                                     | 3.55   | 1.2%             |           | lls              | 66                 | 55                       | 51             |
| Z142C                   | Barnes-Buse-Sves loams, coteau, 2 to 9 percent slopes                                    | 2.02   | 0.7%             |           | IIle             | 63                 | 53                       | 56             |
| Z153A                   | Lamoure-Rauville silty clay loams, channelled, 0 to 2 percent slopes, frequently flooded | 0.28   | 0.1%             |           | Vlw              | 13                 | 11                       | 16             |
| Z137F                   | Buse-Forman loams, 15-40 percent slopes, very stony                                      | 0.20   | 0.1%             |           | Vlls             | 6                  | 5                        | 13             |
| Z145F                   | Buse-Barnes loams, coteau, 9 to 40 percent slopes, very stony                            | 0.07   | 0.0%             |           | Vlls             | 6                  | 5                        | 13             |
| Z113A                   | Vallers-Parnell complex, coteau, 0 to 2 percent slopes                                   | 0.06   | 0.0%             |           | IVw              | 43                 | 36                       | 23             |
| <b>Weighted Average</b> |  |        |                  |           |                  | <b>22.3</b>        | <b>18.7</b>              | <b>20.2</b>    |

\*c: Using Capabilities Class Dominant Condition Aggregation Method